

Xinba™

Advanced XBRL Analyzer

HITACHI
Inspire the Next

Xinba™ is an advanced XBRL tool analyzer and an instance viewer, working as a Microsoft® Excel Add-In. It provides end users the capability to consume XBRL 2.0a and 2.1 compliant financial information directly into Microsoft® Excel by accessing taxonomies and instances stored locally, over the network, or via Web Services on the Internet. With Xinba™, end users can perform examination and analysis on XBRL financial data and generate customized financial reports. Xinba™ runs on all versions of Microsoft® Excel – 2000, XP, and 2003.

Using Microsoft® Excel Interface

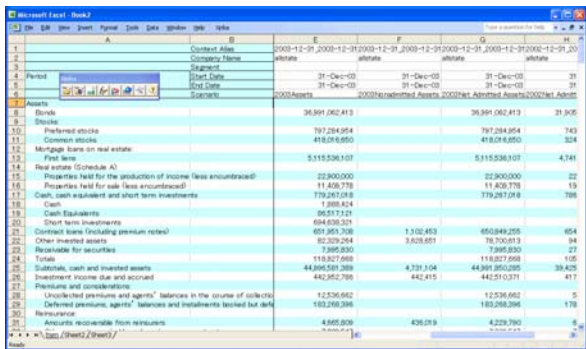
Xinba™ is a Microsoft® Excel Add-In. It allows the import of XBRL financial data and the creation of KPI (Key Performance Indicating) graphs in the same manner as using Microsoft® Excel. Further analysis can be performed on the same data using Microsoft® Excel.

Providing Worksheet Functions

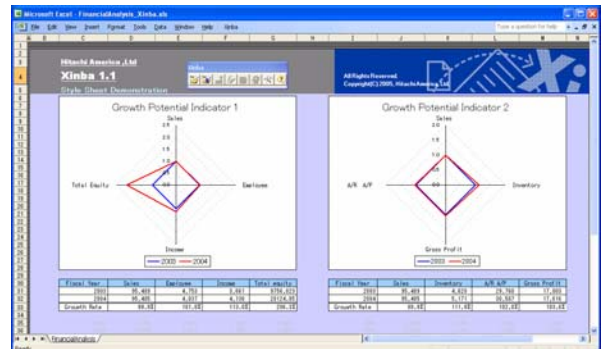
Xinba™ provides XBRL Worksheet Functions, enabling the use of XBRL dataset in an Excel spreadsheet. From balance sheet to cash flow statements or from total sales to sales/recurring, Xinba™ utilizes XBRL dataset to the fullest extent of its capabilities.

Pre-defined & “Create Your Own” Analysis Templates

Xinba™ offers pre-defined templates sets and the ability to customize one's own. With the use of templates, there is no more manual “cut & paste” of data. XBRL dataset can be imported for analysis in a straightforward manner.



| | 2000-12-31 | 2000-12-31 | 2000-12-31 | 2000-12-31 |
|---|----------------|------------|----------------|------------|
| Assets | | | | |
| Cash | 36,991,062.413 | | 36,991,062.413 | 31,305 |
| Debt | | | | |
| Preferred stock | 797,284,054 | | 797,284,054 | 743 |
| Common stock | 418,216,050 | | 418,216,050 | 324 |
| Mutual funds on real estate | | | | |
| Real estate (Schedule A) | 5,115,536,107 | | 5,115,536,107 | 4,741 |
| Real estate (Schedule A) | 22,900,000 | | 22,900,000 | 22 |
| Properties held for the production of income (less encumbrances) | 11,409,778 | | 11,409,778 | 19 |
| Cash, cash equivalents and short term investments | 779,287,016 | | 779,287,016 | 706 |
| Cash | 1,898,424 | | | |
| Cash Equivalents | 88,517,121 | | | |
| Short term investments | 694,309,351 | | | |
| Contract loans (including premium netted) | 691,361,708 | 1,102,483 | 880,849,295 | 804 |
| Other invested assets | 82,529,254 | 3,628,051 | 79,700,013 | 94 |
| Receivable for securities | 7,995,830 | | 7,995,830 | 27 |
| Taxes | 118,827,668 | | 118,827,668 | 106 |
| Subtotals, cash and invested assets | 44,998,581,389 | 4,739,104 | 44,981,350,285 | 39,425 |
| Investment income due and accrued | 442,852,789 | 442,415 | 442,510,371 | 417 |
| Premiums and considerations | | | | |
| Unallocated premiums and agents' balances in the course of collection | 12,236,662 | | 12,236,662 | 5 |
| Deferred premiums agents' balances and impairments less than self | 182,268,396 | | 182,268,396 | 178 |
| Reinsurance | 4,666,808 | | 4,229,796 | 4 |
| Amounts receivable from reinsurers | | 426,018 | | 2 |



Hitachi America, Ltd.

Please visit us online at www.hitachi.us/xbrl

Email: xbrl@hal.hitachi.com

© 2005 Hitachi America, Ltd. All rights reserved.